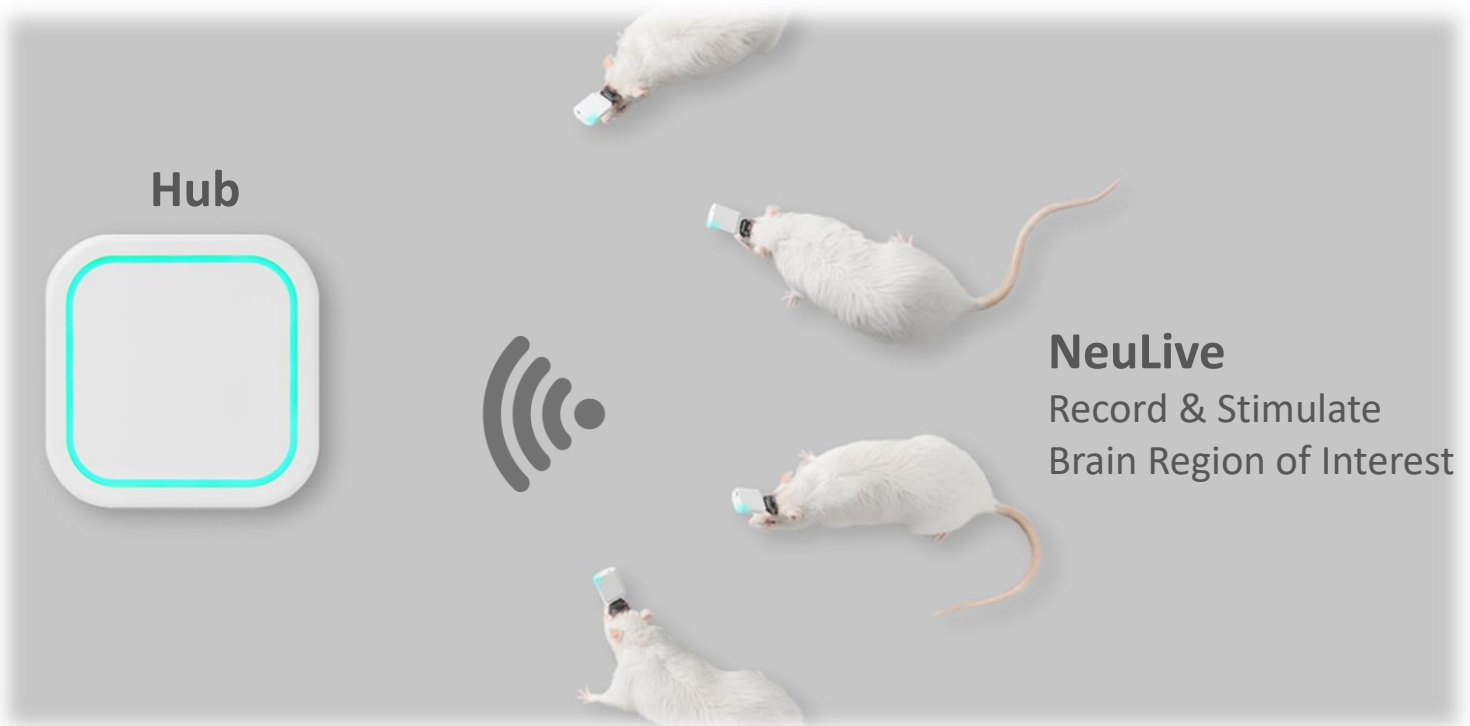


# NeuLive

## Autonomous, Smartphone-Like Brain Explorer



### NeuLive

Record & Stimulate  
Brain Region of Interest



### User Devices

Visualize & Control  
on Webpage

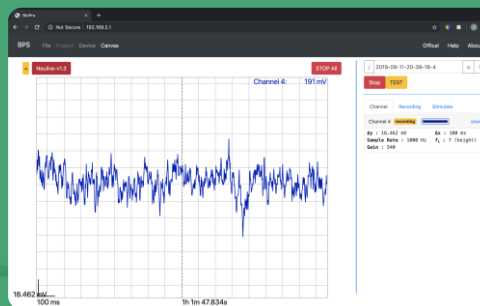
### Free Subject



Headstage with

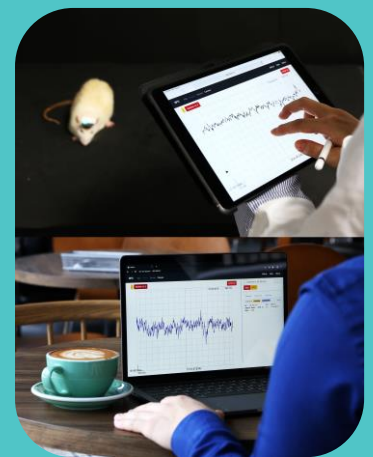
- ✓ Wireless Connection to Hub
- ✓ Miniature Dimension
- ✓ Light Weight

### Plug & Play



- ✓ Control via Webpage
- ✓ Control with Mobile Device
- ✓ Intuitive User Interface
- ✓ Real-Time Data Plot

### Connected Team




- ✓ IoT Devices
- ✓ Remote Control
- ✓ Multi-User Joint Research
- ✓ Multi-Device Configuration
- ✓ Direct Data Download

# Specification

## NeuLive 3.5 BPS-NL-035



|                              |   |
|------------------------------|---|
| Recording Channels           | 32 (max 128 ch. w. NL-035ex)  |
| Stimulation Channels         | 16 (max 64 ch w. NL-035ex)  |
| Dimension /Weight            | 2.9cm x 2.0cm x 0.8cm / 3.2g  |
| Battery Duration             | > 5 hrs (60 mAh)  |
| Wireless Range               | 2 m   |
| 3D Accelerometer             | Yes   |
| Optical stimulation channels | 4   |
| Memory extension             | 128 GB (SD)   |
| <b>Recording</b>             |   |
| Noise                        | < 6 $\mu\text{V}_{\text{rms}}$ (0.1~300Hz)  |
| ADC Resolution               | 12 bit  |
| Sample Rate                  | 10k Sample/s (Bluetooth) ✖<br>100k Sample/s (SD.) ✖  |
| <b>Stimulation</b>           |   |
| Level                        | 5 $\mu\text{A}$ - 4mA ( Step: 5 $\mu\text{A}$ )   |
| Frequency                    | 1~20k ( Step: 1Hz )   |
| Pulse Width                  | 10 $\mu\text{s}$ ~10ms ( Step: 10 $\mu\text{s}$ )   |
| Waveform                     | Pos/Neg/Biphasic  |

## Hub BPS-HUB-02



|                    |  |
|--------------------|--|
| Dimension          | 14 x 14 x 5 cm                               |
| User Interface     | Web page    Wi-Fi Connection                 |
| Storage            | 128 G  |
| Power              | Micro USB ( Adapter included )<br>10 min UPS |
| Concurrent Control | 4 NeuLives (for 4 animals)                   |

## Electrode ( Customized Model )



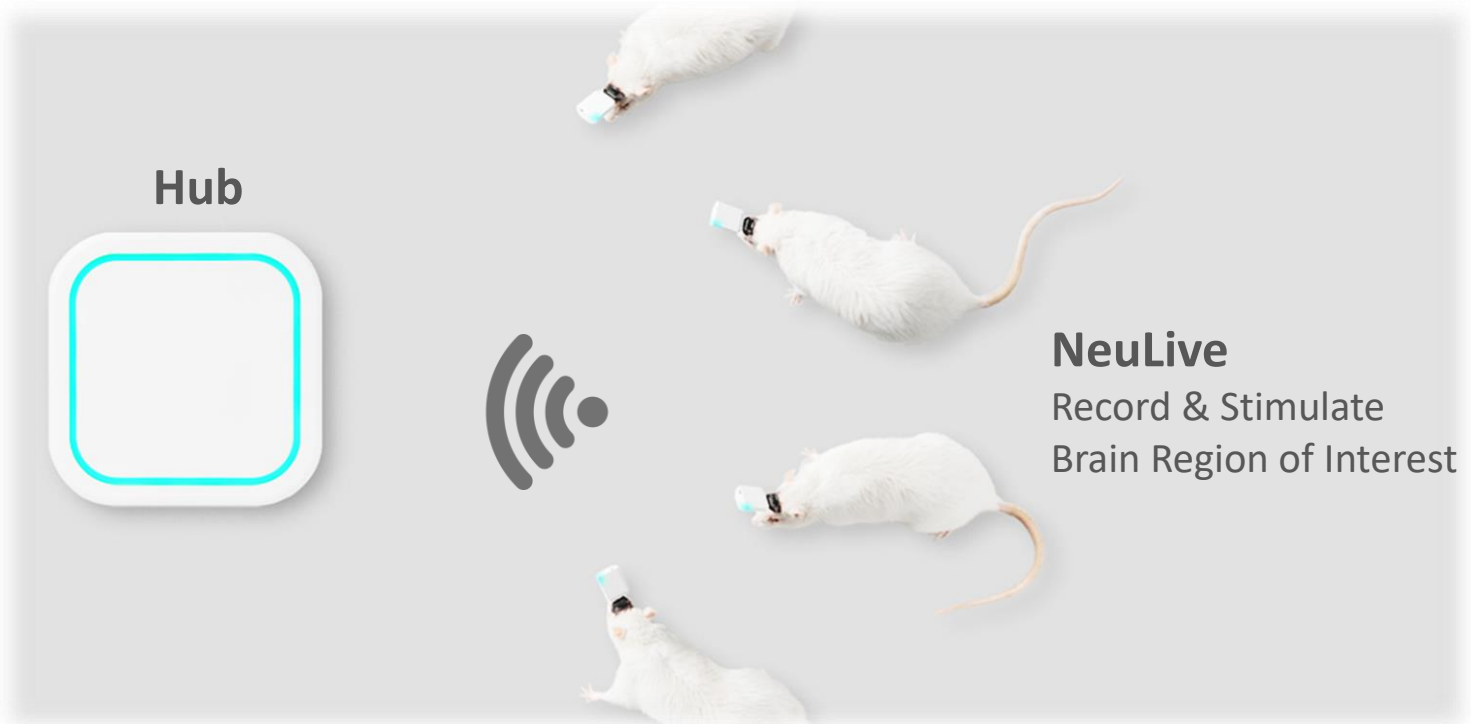
Customized electrodes for multi-site recording/stim./optical stim.



[www.bioproweb.com/series/neulive/](http://www.bioproweb.com/series/neulive/)

# NeuLive

## Autonomous, Smartphone-Like Brain Explorer



### NeuLive

Record & Stimulate  
Brain Region of Interest



### User Devices

Visualize & Control  
on Webpage

### Free Subject



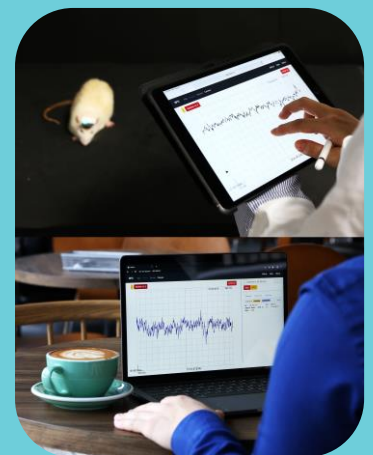
- Headstage with
- ✓ Wireless Connection to Hub
- ✓ Miniature Dimension
- ✓ Light Weight

### Plug & Play



- ✓ Control via Webpage
- ✓ Control with Mobile Device
- ✓ Intuitive User Interface
- ✓ Real-Time Data Plot

### Connected Team



- ✓ IoT Devices
- ✓ Remote Control
- ✓ Multi-User Joint Research
- ✓ Multi-Device Configuration
- ✓ Direct Data Download